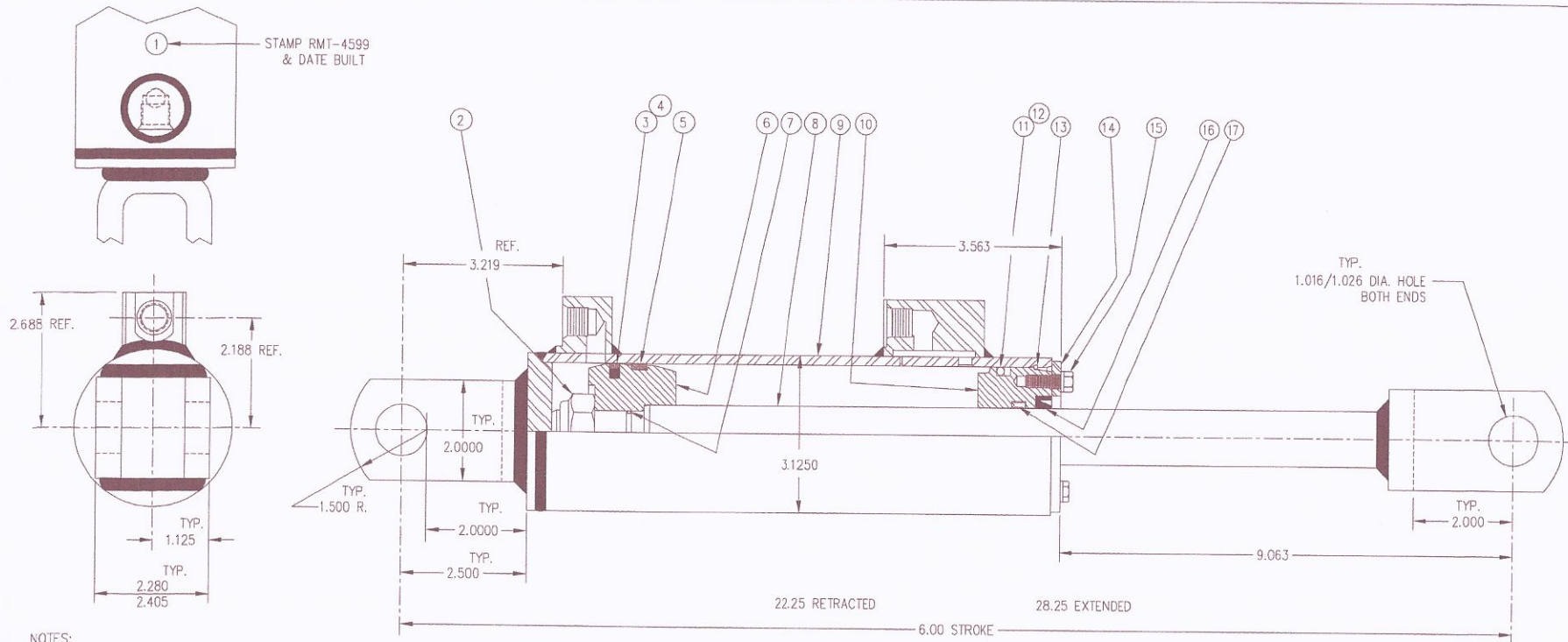


Drawing Approval Required

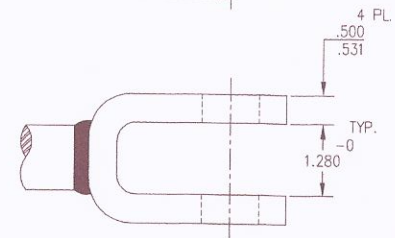
Sign, Date, and Return to
Rosenboom Machine & Tool, Inc. - Ohio Div.



NOTES:


1. 1.1250 DIA. HARD CHROME PLATED ROD
2. .563-18 SAE NO. 6 O-RING PORTS
3. REPHASING ORIFICE DIA. = .046
4. 3000 PSI MAXIMUM OPERATING PRESSURE
5. SEAL KIT NO. 44-4599-S INCLUDES ITEMS 3,4,5,7,11,12,16 & 17 & (1) 27-969-0 & (1) 30-927
6. SAFETY FACTORS BELOW 2:1 AT 3000 PSI -
ROD PINEYE = 0.90:1
BASE PINEYE = 0.90:1
7. STATIC TEST AT 3500 PSI IN BOTH DIRECTIONS
8. PAINT GLOSS BLACK

NOTICE: This document contains proprietary information and it shall not be used or reproduced or its contents disclosed in whole or in part without the prior written consent of Rosenboom Machine & Tool, Inc.



SYM	REVISION	DATE	BY	REF. NO.	PART NO.	DESCRIPTION	QTY
I	30-15227 WAS 30-927, REVISED SEAL KIT	5-10-06	DES				
H	REVISED TO FORMED CLEVIS DESIGN, 1.125 WAS .656, 1.280 -0 WAS 1.280/1.343, ADDED 2.280/2.405, .090:1 WAS 1.35:1	11-9-04	DES				
G	REVISED TO WELDED CLEVIS DESIGN, .656 WAS 1.125, 1.280/1.343 WAS 1.250 +.063/-0.000, 1.35:1 WAS .090:1	5-18-04	DES				
F	REVISED PISTON	11-13-03	DES				
E	2.250/2.375 WAS 2.2500, .500/.531 WAS .5000	5-30-03	DES				
D	3000 WAS 2500, UPDATED SAFETY FACTORS, 3.563 WAS 3.625	10-4-02	DES				
C	UPDATED TO MATCH SEAL KIT, UPDATED ELBOW PORT 2.188 REF. WAS 2.234 REF., 3.218 WAS 3.125	9-12-02	GAJ				
B	1.2500 WAS 1.1250, 2.2500 WAS 2.1250, 1.125 WAS 1.063, 2.688 WAS 2.938, 2.234 WAS 2.313	8-19-02	DES				
A	REVISED PISTON, 3.625 WAS 3.250	7-23-02	DES				

REF. NO.	PART NO.	DESCRIPTION	QTY
18			
17	29-1060-UR	ROD SEAL	1
16	30-15227	ROD WIPER	1
15	25-4584A	CAP SCREW	2
14	53-5298	WASHER	1
13	67-5300	LOCKWIRE	1
12	28-913-1	BACKUP	1
11	27-913-0	O-RING	1
10	46-16094	SLEEVE	1
9	47-16093	BARREL ASSEMBLY	1
8	48-16099	ROD ASSEMBLY	1
7	27-933-0	O-RING	1
6	45-16095	PISTON	1
5	31-16098	WEAR RING	1
4	31-16097	PISTON SEAL (TFE)	1
3	31-16096	LOADER RING	1
2	36-10937	FULL LOCKNUT	1
1	4599	RMT MONTH & YEAR BUILT	-

 ROSENBOOM MACHINE & TOOL, INC. - OHIO DIV. BOWLING GREEN, OHIO		CAD
TOLERANCES UNLESS OTHERWISE SPECIFIED. DECIMALS .XXXX ±.015 REMOVE ALL BURRS. ANGLES ±2° .XXX ±.063 BREAK ALL CORNERS .010 RADIUS MIN. .XX ±.125		
F.M.F. 2.75 X 6.00 TRIPLE C, INC. SCALE 1=1 DATE 6-19-02	TITLE 2.75 BORE X 6.00 STROKE TRIPLE C, INC. DWG. NO. 600-4599	BY DES CHKD.
REF. DWG. EN-300-DA	MAT'L.	QTY